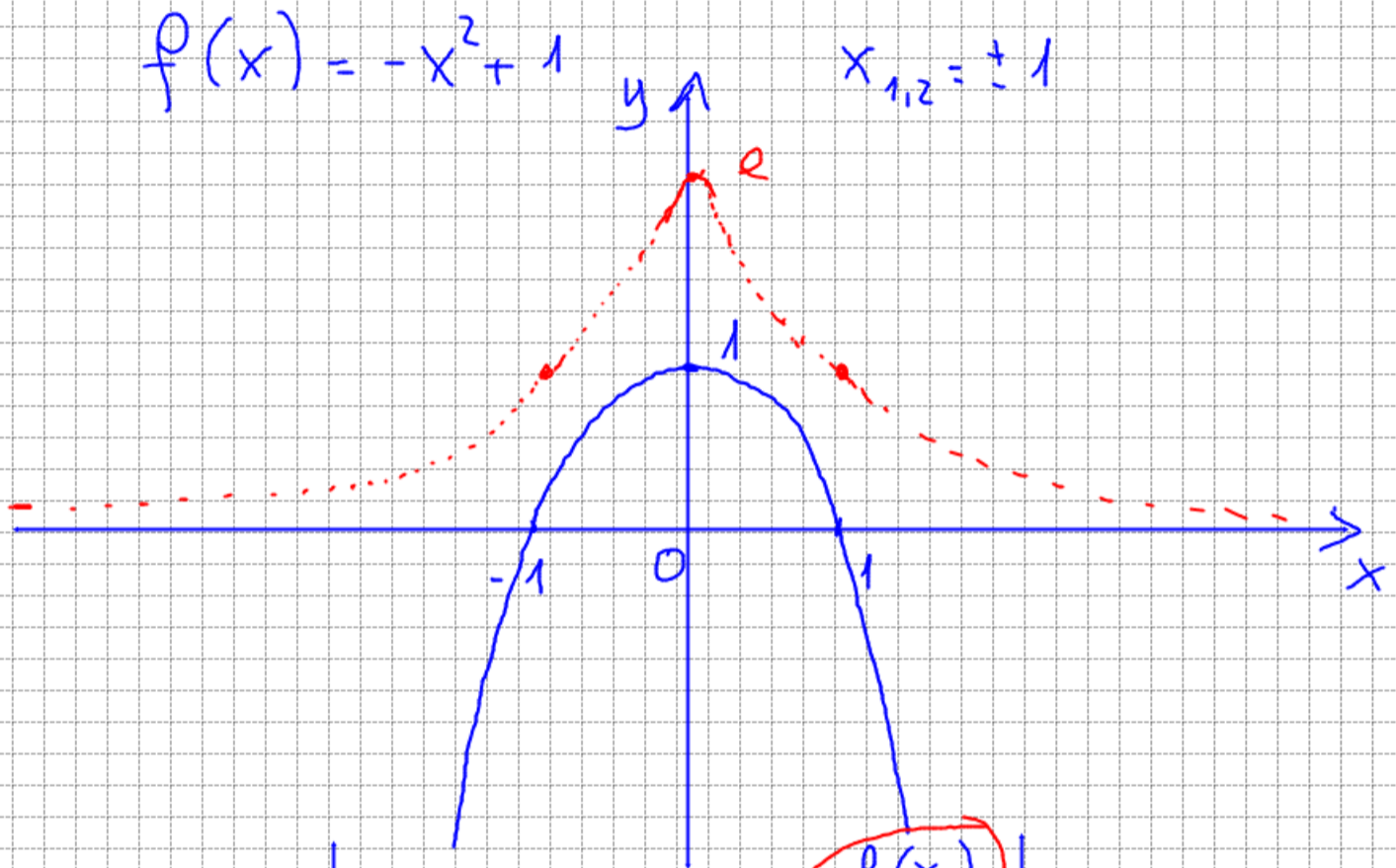


# ESERCIZIO 94 PAG 312

$f(x) = -x^2 + 1$  Tracciare il grafico.

$g(x) = e^{f(x)}$  Tracciare il grafico.



$x$	$f(x)$	$e^{f(x)}$
$-\infty$	$-\infty$	$e^{-\infty} \rightarrow \frac{1}{e^{\infty}} \rightarrow \frac{1}{\infty} \rightarrow 0$
$\nearrow$	$\nearrow$	$\nearrow$
$-1^-$	$0^-$	$e^{-0} \rightarrow \frac{1}{e^0} \rightarrow 1^-$
$-1^+$	$0^+$	$e^{+0} \rightarrow 1^+$
$\nearrow$	$\nearrow$	$\nearrow$
$0^-$	$1^-$	$e^{1^-} \rightarrow e^-$
$0^+$	$1^+$	$e^{1^+} \rightarrow e^+$
$\nearrow$	$\searrow$	$\searrow$
$1^-$	$0^+$	$e^{0^+} \rightarrow 1^+$
$1^+$	$0^-$	$e^{0^-} \rightarrow 1^-$
$\nearrow$	$\searrow$	$\searrow$